

Courses & Dist^{ce} up yr. Ch.

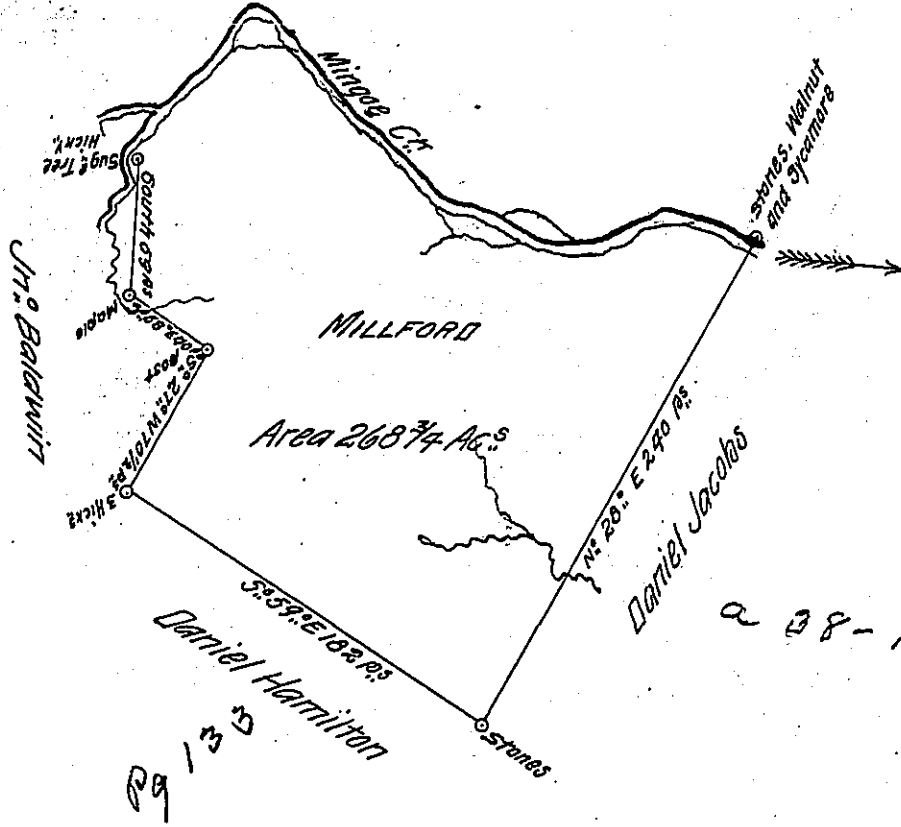
West 133 ps

N: 45: W 122 D:

S: 40: W 80 D:

330

275-56



28-198

A Draught of a survey called "Millford" situate on Mingo Cr. in Washington County contain^g 268 3/4 Ac.^s strict measure executed Feb^y. 11th 1786 for Jn^o. Hamilton Ass^{ce} of Maurice Brady in consequence of a certifi^c for 400 Ac.^s granted to s^r. Maurice Brady by the commiss^{rs} appointed by Virginia to adjust the claims to unpatented Lands in the counties Monong^a. Yohg^a and Ohio and duly entered with the County Surveyor as appears from yr. List of Entries transmitted from the Surv^r. Gen^l. Office. Ret^d. 17 March-88 Ent^d. 19 Feb-80.

Note in the list of entries it is wrote Ja^o. Brady 400 Ac.^s on Mingo — but their being no such claimant to land on that Cr. and Maurice Brady having a certifi^c from the commiss^{rs} with a certifi^c of its legal entry on the back in the hand writing of W^m. Crawford J^o. Yoh-County we apprehend it is a mistake

Jn^o. Lukens Esq^t. S. Gen^l.

Presley Nevill }
 Matt^y. Fitchie } D. Ss.

IN TESTIMONY that the above is a copy of the original remaining on file in the Department of Internal Affairs of Pennsylvania, made conformably to an Act of Assembly approved the 16th day of February, 1833, I have hereunto set my Hand and caused the Seal of said Department to be affixed at Harrisburg, this thirty first day of January 1905

George R. Brown
 Secretary of Internal Affairs.